

ST. MARY'S EPISCOPAL SCHOOL

— For Girls. For Life. —

2019-2020 PROFILE

stmarysschool.org | 901-537-1472

60 Perkins Extended

Memphis, Tennessee 38117

The mission of St. Mary's Episcopal School is to provide a superior educational experience for girls which will encourage and enable each student to reach her individual potential.



Albert L. Throckmorton
Head of School
athrockmorton@stmarysschool.org

Carrie Steakley, Ed. D.
Head of Upper School
901-537-1420
csteakley@stmarysschool.org

Vicki Englehart-Thompson
Dean of College Counseling
901-537-1428
vethompson@stmarysschool.org

Chancey Thompson
Associate Dean of College Counseling
901-537-1480
cthompson@stmarysschool.org

Lee Avant
Registrar/College Counseling Coordinator
901-537-1474
lavant@stmarysschool.org

HIGH SCHOOL
CEEBCODE: 431462



THE SCHOOL

St. Mary's is a college preparatory school for girls 2-years-old through 12th grade. Admission to St. Mary's is selective and is based on previous school records, personal interviews, teacher recommendations, and standardized testing. Chapel, held weekly in Lower School and daily in grades 6-12, offers a time for reflection and a focal point for community life. Girls participate within the parameters of their own faiths. The students of St. Mary's encompass a broad range of socioeconomic, religious, and ethnic backgrounds. They come from all parts of the Memphis metropolitan area, including northern Mississippi, eastern Arkansas, and western counties in Tennessee.

ENROLLMENT

Upper School: Grades 9-12	265	Total Enrollment:	827
Middle School: Grades 6-8	184	Students of Color (self-identified)	30.3%
Lower School: Grades 1-5	214	Students Receiving Financial Aid	18.5%
Early Childhood: 2 year old-SK	164		

HISTORY

From its beginning in 1847, under the auspices of the historic Calvary Episcopal Church, St. Mary's has been dedicated to the education of girls within a nurturing and loving Christian environment. Now, more than 170 years later, St. Mary's teachers use innovative approaches in their classrooms, incorporating real-life learning experiences into their lesson plans. They employ teaching strategies such as collaborative learning, which have been proven more effective for girls. As one of the premier college-preparatory schools for girls in the South, St. Mary's recognizes the need to prepare young women for a lifetime of opportunity. The life skills that St. Mary's students develop, such as decision-making and leadership skills, enable them to succeed in college and beyond.

FACULTY

Upper School Faculty and Administrators	44
Teachers with Master's Degrees	28
Teachers with Doctoral Degrees	9
Student/Faculty Ratio	9:1

HONOR CODE STATEMENT

A St. Mary's girl expresses the school's Light and Life by speaking only the truth, claiming only work produced through her own effort, and respecting others' physical and intellectual property.

REQUIREMENTS FOR GRADUATION

GRADUATION REQUIREMENTS

St. Mary's has one graduation award, the diploma, which carries with it the school's recommendation to college. The program of study leading to graduation includes 21.5 credits distributed as follows:

Department	Credit
English	4.0
Mathematics	4.0
Science	3.0
<i>(Biology, Chemistry, Physics required)</i>	
Social Studies	3.0
<i>(US History & World History required)</i>	
World Languages	3.0
<i>(all in one language)</i>	
Fine Arts	1.0
Religious Studies	1.0
Health/Wellness	1.0
Electives	1.5

ACADEMIC SCHEDULE

St. Mary's Upper School operates on a schedule of two quarters for each of two semesters with examinations at the end of each semester. Students are scheduled in no fewer than five courses and as many as seven courses, on a five-day rotating schedule, with only six courses meeting on each day.

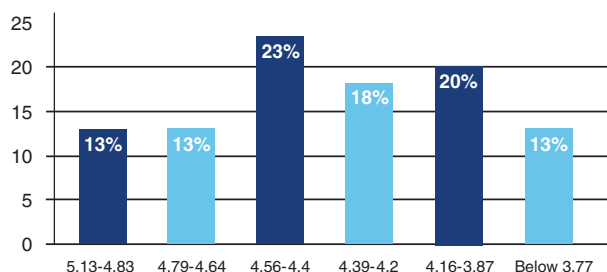
HIRS

The Honors Independent Research Study program (HIRS) is a one semester course that offers the student an opportunity to conduct a high-level research project as part of her academic experience. The student will consider a particular problem, formulate a hypothesis, gather data and construct a conclusion. Evaluation of the student's work includes a research paper and an oral defense of her project.

ST. MARY'S CUMULATIVE WEIGHTED GPA

Through the end of junior year for the Class of 2020

(57 Students)



MID-YEAR TRANSCRIPTS

First semester grades for seniors will be sent to colleges in January.

FINAL TRANSCRIPTS

Final transcripts for seniors will be sent to colleges in mid-June.

GPA CALCULATION

St. Mary's calculates a weighted GPA based on a 5.0 scale. Students receive a sliding value for grades (A+ is worth more than an A, which is worth more than an A-, etc.), with Honors courses receiving half a quality point (.5) and AP courses receiving a full quality point (1).

Note: School policy precludes ranking of any kind.

ONE SCHOOLHOUSE

St. Mary's Episcopal School is a charter member of The Online School for Girls, which is a program made available to schools via One Schoolhouse. The School has dedicated itself to the principles of *Connection, Collaboration, Creativity, and Application*. Courses taken through One Schoolhouse are included in the St. Mary's GPA, and are indicated on the St. Mary's transcript with the notation (OSH).

CLASS OF 2019 INFORMATION AND AWARDS

57 graduates | 98% attending a four-year college or university | 2% gap year experience

National Merit Scholarship

Program:

3 National Merit Finalists
6 National Merit Commended
18% of the class recognized by the National Merit Scholarship Program

Advanced Placement

Scholars:

4 National AP Scholars
25 Scholars with Distinction
18 Scholars with Honors
23 AP Scholars

ACT Testing

Composite 28-32
English 28-35
Mathematics 26-31
Reading 31-35
Science Reasoning 26-32

SAT Testing

ERBW 655-715
Mathematics 615-695
Writing 32-37
Total 1260-1410

Mid 50%

28-32
28-35
26-31
31-35
26-32

Mid 50%

655-715
615-695
32-37
1260-1410

Advanced Placement Testing

AP Exams are mandatory in each AP course. Students rarely take an AP course before sophomore year and must gain approval to take more than three in any year.

Number of tests taken - 319 in 21 subjects

86% of scores were 3 or higher
57% of scores were 4 or 5

UPPER SCHOOL COURSE OFFERINGS

English Department

English 9 (H, HA)
English 10 (H, HA)
British Literature I (H) *
British Literature II (H) *
English Language (AP) *
English Literature (AP) *
Creative Writing (H) *
Minority Voices in Literature (H) *
American/European Poetry (H) *
Faith & Doubt in Literature (H) *
Introduction to Journalism **
Women's Studies in Literature (H) *

Math Department

Algebra I
Algebra II (S, H)
Geometry (S, H)
Precalculus (H, H PreAB, H PreBC)
Introduction to Calculus (H) *
Calculus (AP AB, AP BC)
Statistics (AP)
Introduction to Proof Based Math +
Foundations in Personal Finance *

Science Department

Biology (S, H, AP)
Chemistry (S, H, AP)
Physics (H, AP)
Anatomy & Physiology (H)
Introduction to Computer Science *
Introduction to Engineering *
Independent Research Study (H) *
Computer Science Principles (AP)

Social Sciences Department

World Regional Geography *
World History I *
US History (H, AP)
World History II (H, AP)
US Government and Politics (AP) *
Comparative Government and Politics (AP) *

World Languages Department

Latin II
Latin III (H)
Latin IV (AP)
Readings in Roman Literature/Culture (H) *
History of Latin Language I (H) *
History of Latin language II (H) *
Spanish I
Spanish II
Spanish III (H)

Spanish IV (H)
Spanish V (H, AP)
Hispanic Humanities/Culture (H) *
Spanish Immersion *
French I
French II
French III (H)
French IV (H)
Francophone Humanities/Culture (H) *
Francophone Film/Lit/Arts (H) *
French Cultural Study *

Fine Arts Department

Art History (H, AP) *
Music History (H) *
Humanities I (H) *
Humanities II (H) *
Harlem Renaissance (H) **
Music Theory (AP)

Religious Studies Department

The Bible and Its Influence *
Faith Foundations *
Facing History and Ourselves (H) *
Religion & Literature: Meaning of Life (H) *
Voices of Faithful Women (H) *

Health/Wellness Department

PE/Health I *
PE/Health II *
Wellness Independent Study *

Musical/Performing Arts Department

Chamber Ensemble (audition)
Concert Choir
Wind Ensemble
Beginning Guitar
Performance Arts *
Acting *

Visual Arts Department

Studio Art I Fall (S, H) *
Studio Art I Spring (S, H) *
Studio Art II Fall (S, H) *
Studio Art II Spring (S, H) *
Photography I *
Photography II *
Portfolio Prep I (H) *
Portfolio Prep II (H) *

* Half-credit course taught during the school year

** Half-credit course taught during the summer

+ Receives AP quality points

St. Mary's will report to colleges any record of academic or behavior misconduct resulting in an out-of-school suspension.

COLLEGE ACCEPTANCES - CLASSES OF 2016-2019

*Colleges listed in **bold** indicate at least one matriculated student*

Adelphi University
University of Alabama,
Tuscaloosa
 University of Alabama,
 Birmingham
 Allegheny College
 American University
 Appalachian State University
 University of Arizona
 Arizona State University
University of Arkansas
 The University of the Arts
Auburn University
 Baldwin Wallace College
 Ball State University
 Bard College
Bates College
Baylor University
 Bellarmine University
 Belmont University
 Berry College
 Birmingham-Southern College
Boston College
Boston University
 Brandeis University
University of British Columbia
 Butler University
 California State University,
 Long Beach
 University of California, Berkeley
 University of California, Irvine
University of California,
Los Angeles
 University of California, San Diego
 University of California,
 Santa Barbara
Carleton College
 Carnegie Mellon University
 Case Western Reserve University
 Catholic University of America
Centenary College of Louisiana
Centre College
Chapman University
College of Charleston
University of Chicago
Christian Brothers University
 University of Cincinnati
Clemson University
 Colby College
Colgate University
 Colorado College
University of Colorado, Boulder
 University of Colorado, Denver
Colorado State University
Columbia College Chicago
 University of Connecticut
Cornell University
Dartmouth College
 Davidson College
University of Denver
DePaul University
 DePaul University
 Drexel University
Duke University
 Eastman School of Music
Eckerd College
Elon University
 Emerson College
Emory University
Flagler College
University of Florida
 Florida A&M University
 Florida Institute of Technology

Florida State University
Fordham University
 Furman University
 George Mason University
George Washington University
Georgetown University
University of Georgia
Georgia Institute of Technology
 Georgia State University
 Goucher College
 Hampton University
Harvard University
 Haverford College
 Hendrix College
 High Point University
 Hofstra University
 Hollins University
Hope College
Howard University
 College of the Holy Cross
University of Illinois, Chicago
 University of Illinois,
 Urbana-Champaign
Indiana University, Bloomington
 University of Iowa
 Ithaca College
Johns Hopkins University
Kenyon College
Kent State University
 University of Kentucky
 Lake Forest College
 Lawrence University
 Lehigh University
 Lewis and Clark College
Long Island University, Brooklyn
 Long Island University, Post
Louisiana State University
 Loyola Marymount University
Loyola University, Chicago
 Loyola University, Maryland
Loyola University, New Orleans
 Lyon College
 Macalester College
 Marquette University
University of Maryland,
Baltimore County
University of Maryland,
College Park
 Marymount University
Marymount Manhattan College
 University of Massachusetts,
 Amherst
McGill University
University of Memphis
 Mercer University
University of Miami
 Miami University
 University of Michigan
 Middle Tennessee State University
 Millsaps College
University of Mississippi
Mississippi State University
University of Missouri, Columbia
 University of Missouri, Kansas City
 Monmouth University
Montana State University,
Bozeman
 Montclair State University
Mount Holyoke College
 Muhlenberg College
The New School
New York University
Newberry College

University of North Carolina,
Chapel Hill
 University of North Carolina,
 Charlotte
 University of North Carolina,
 Wilmington
 North Carolina State University
Northeastern University
Northwestern University
University of Notre Dame
 Nova Southeastern University
Oberlin College
Oberlin Conservatory of Music
 Occidental College
The Ohio State University
 Ohio University
 University of Oklahoma
 Oklahoma City University
University of Oregon
 Oregon State University
 Oxford College of Emory
 University
Pace University
University of Pennsylvania
 Pennsylvania State University
 Point Park University
 Presbyterian College
Princeton University
 University of Puget Sound
 Purchase College, SUNY
Purdue University
 Queens University of Charlotte
 University of Redlands
 Reed College
Rensselaer Polytechnic Institute
 University of Rhode Island
Rhodes College
Rice University
University of Richmond
Rollins College
Rutgers University
University of St. Andrews
Saint Louis University
Samford University
 University of San Diego
 University of San Francisco
 Santa Clara University
Savannah College of Art and
Design
School of the Art Institute of
Chicago
 Scripps College

Seattle University
 Simmons University
Smith College
The University of the South
University of South Carolina
University of Southern
California
 Southern Methodist University
Spelman College
Spring Hill College
 Stony Brook University, SUNY
 Syracuse University
 University of Tampa
 Temple University
 Tennessee State University
University of Tennessee,
Chattanooga
University of Tennessee,
Knoxville
University of Texas, Austin
Texas Christian University
University of Toronto
 Trinity College
 Trinity University
 Tufts University
Tulane University
Vanderbilt University
Vassar College
 University of Vermont
 Villanova University
University of Virginia
 Virginia Commonwealth University
 Virginia Tech
 Wake Forest University
 University of Washington
Washington and Lee University
Washington University in
Saint Louis
Webster University
 Wellesley College
 West Virginia University
 Western Michigan University
 Westmont College
 Whitman College
College of William and Mary
University of Wisconsin,
Madison
 Wichita State University
Wofford College
 University of Wyoming
Xavier University of Louisiana

The **57 members** of the class of 2019 were accepted to **115** colleges and universities in the U.S. and abroad. They matriculated to **39** institutions in **19** states and the District of Columbia, and earned more than **\$14 million** in merit based scholarships.